

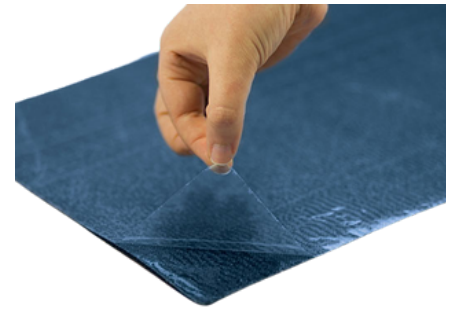


# InstaLay P&S

Peel and Stick acoustic underlays.

# INSTALAY

Peel and stick self-adhesive acoustic underlays.



Demo video

Installation video

Case Studies

CLICK FOR MORE

InstaLay® is well-suited to many environments



Private homes



Multi-family housing



Healthcare



Retail



Hospitality

InstaCradles have many benefits.



Excellent acoustics



Excellent rebound



Comfort underfoot



60 Year guarantee

The system is designed to be easy to install and maintain.



Fast, simple & clean



Reduces sub-floor prep



No subfloor fixing



No wet adhesives



No maintenance

They are sustainable and promote green building.



Reusable & recyclable



Made from recycled rubber tires



Supports the circular economy



Locally produced



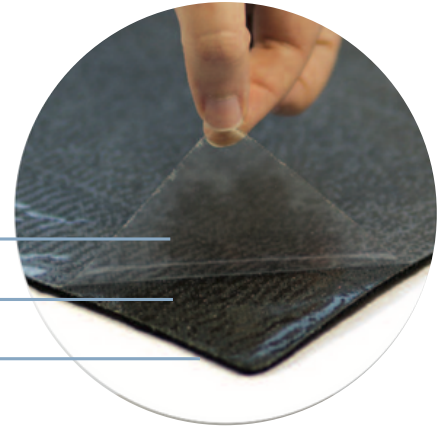
## FLOOR COVERING

Protective Release Film

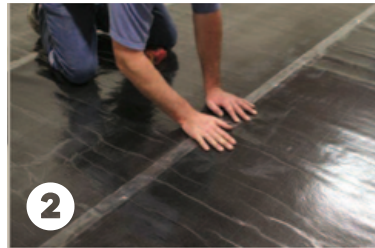
Adhesive Membrane

Rubber Crumb

## SUBFLOOR



1



2

1 Lay InstaLay on the subfloor

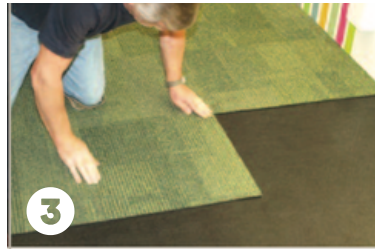
2 Ensure rubber faces down and release film faces up

3 Peel back the release film and apply the floor covering



3

Wood/ laminate/ bamboo



3

Carpet/ carpet tiles



3

Ceramic/ porcelain tiles

## Product Variations

LG

**Low grab**

(non-permanent self-adhesive bond)

HG

**High grab**

(permanent self-adhesive bond)

25HG

**2.5mm underlay HG.**

LVTs/woven vinyl tiles (dryback), with a **thickness of  $\geq 2.0\text{mm}$** , and ceramic, porcelain and natural stone tiles.

30LG

**3mm underlay LG.**

Carpet tiles, LVTs (click joint) with a **thickness of  $\geq 3.0\text{mm}$**  engineered wood/ laminate (click joint).

30HG

**3mm underlay HG.**

LVTs/woven vinyl tiles (dryback) with a **thickness of  $\geq 3.0\text{mm}$** , solid/engineered wood (tongue & groove) and broadloom carpet.

50LG

**5mm underlay LG.**

Carpet tiles, engineered wood/ laminate (click joint).

50HG

**5mm underlay HG.**

Solid/engineered wood (tongue & groove) and broadloom carpet.

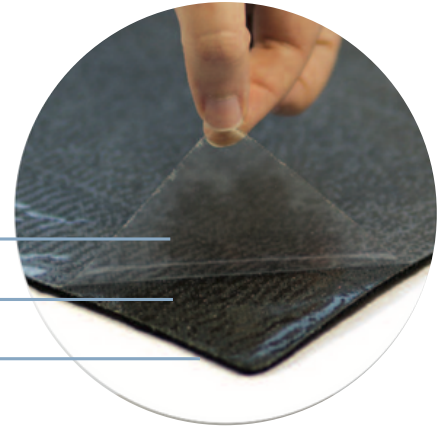
## FLOOR COVERING

Protective Release Film

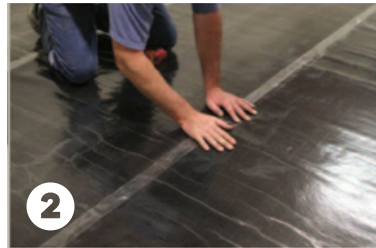
Adhesive Membrane

Rubber Crumb

## SUBFLOOR



1



2

1 Lay InstaLay on the subfloor

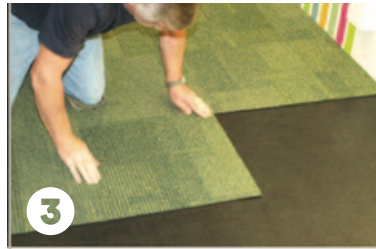
2 Ensure rubber faces down and release film faces up

3 Peel back the release film and apply the floor covering



3

Wood/ laminate/ bamboo



3

Carpet/ carpet tiles



3

Ceramic/ porcelain tiles

## Product Variations

LG

**Low grab**

(non-permanent self-adhesive bond)

HG

**High grab**

(permanent self-adhesive bond)

25HG

**2.5mm underlay HG.**

LVTs/woven vinyl tiles (dryback), with a **thickness of  $\geq 2.0\text{mm}$** , and ceramic, porcelain and natural stone tiles.

30LG

**3mm underlay LG.**

Carpet tiles, LVTs (click joint) with a **thickness of  $\geq 3.0\text{mm}$**  engineered wood/ laminate (click joint).

30HG

**3mm underlay HG.**

LVTs/woven vinyl tiles (dryback) with a **thickness of  $\geq 3.0\text{mm}$** , solid/engineered wood (tongue & groove) and broadloom carpet.

50LG

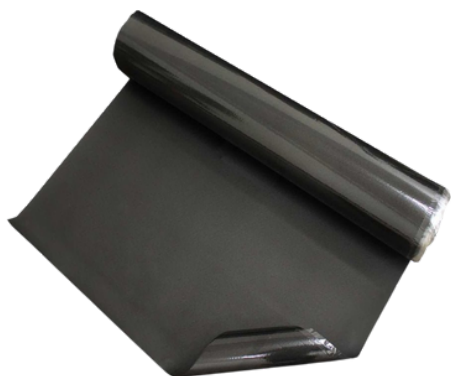
**5mm underlay LG.**

Carpet tiles, engineered wood/ laminate (click joint).

50HG

**5mm underlay HG.**

Solid/engineered wood (tongue & groove) and broadloom carpet.



Demo video

Installation video

Case Studies

CLICK FOR MORE



 **Oscar Dennis**

 **+(254) 72 586 7724**

 **oscar@elementscustomflooring.com**

 **Old House Rd, Shop 14, Nanyuki, Kenya.**

[www.elementscustomflooring.com](http://www.elementscustomflooring.com)

